

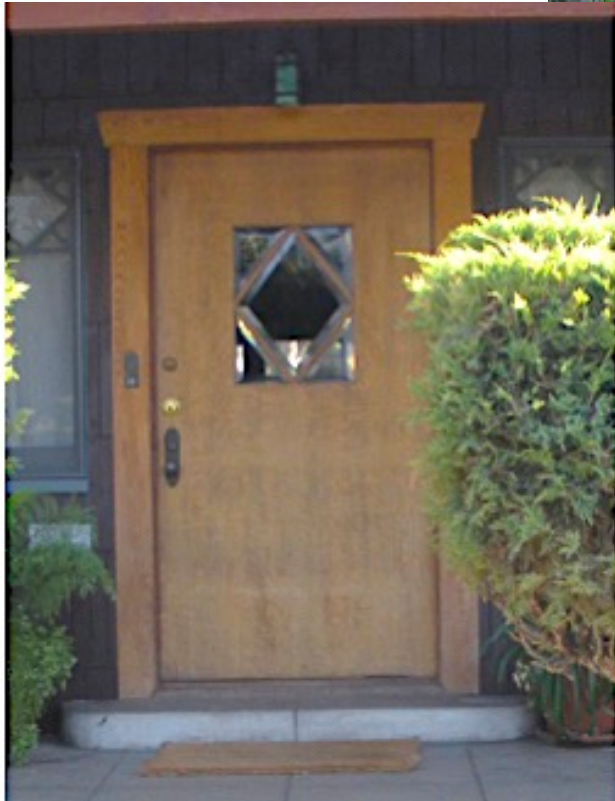
Jefferson Park Historic Preservation Overlay Zone

Doors

Plain doors with a central window in a bold geometric shape (or sometimes a fanciful shape like the crescent moon) are typical to Jefferson Park. The central window can be leaded glass. Note that the doors were typically stained and finished (not painted), and the frames were often also stained and finished just like the door, often to match the door.



More Jefferson Park plain doors. The glass is beveled.



Some plain doors have decorations around the central window. In these cases the window is usually leaded glass. Notice the sidelights on the side of the doors in the two bottom examples



Also common in Jefferson Park are doors that have Arts and Crafts touches such as a “shelf” supported by blocks.



More doors with Arts and Crafts touches



Over the years some doors in Jefferson Park have been replaced with new doors. Below are some examples of new doors.



RESTORATION: Replacement of inappropriate new door with historically appropriate door.

Note: Replacement of doors requires HPOZ approval.

If your house has lost its original door it may be possible to find an appropriate historic door from the Arts and Crafts period at a salvage yard. Salvage yards often have many vintage doors in stock. Search the salvage yards with the measurements you need in hand.

There are also door manufacturers that make good reproductions of Arts and Crafts doors. In this case choose a door whose style fits with the historic doors of Jefferson Park.

